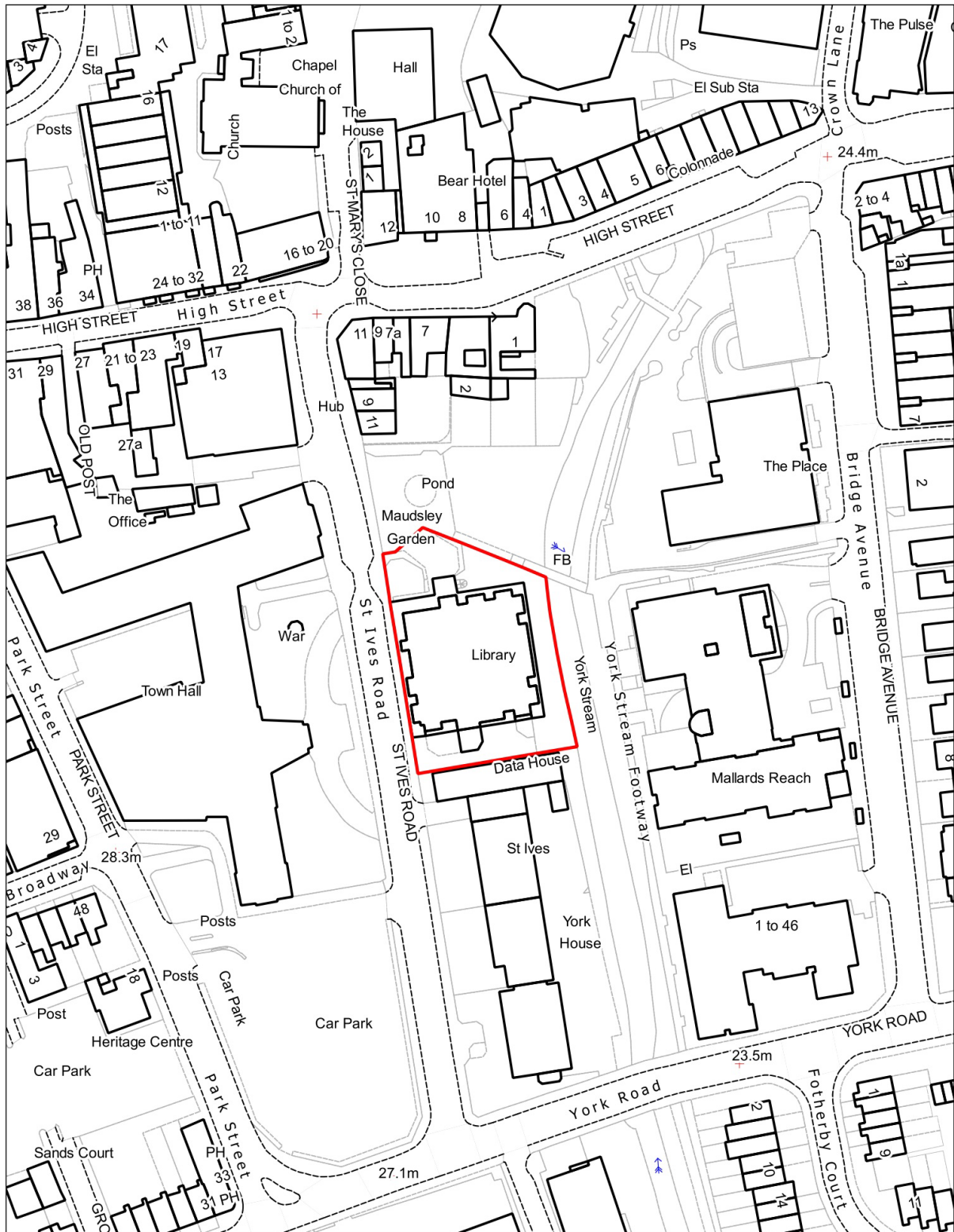
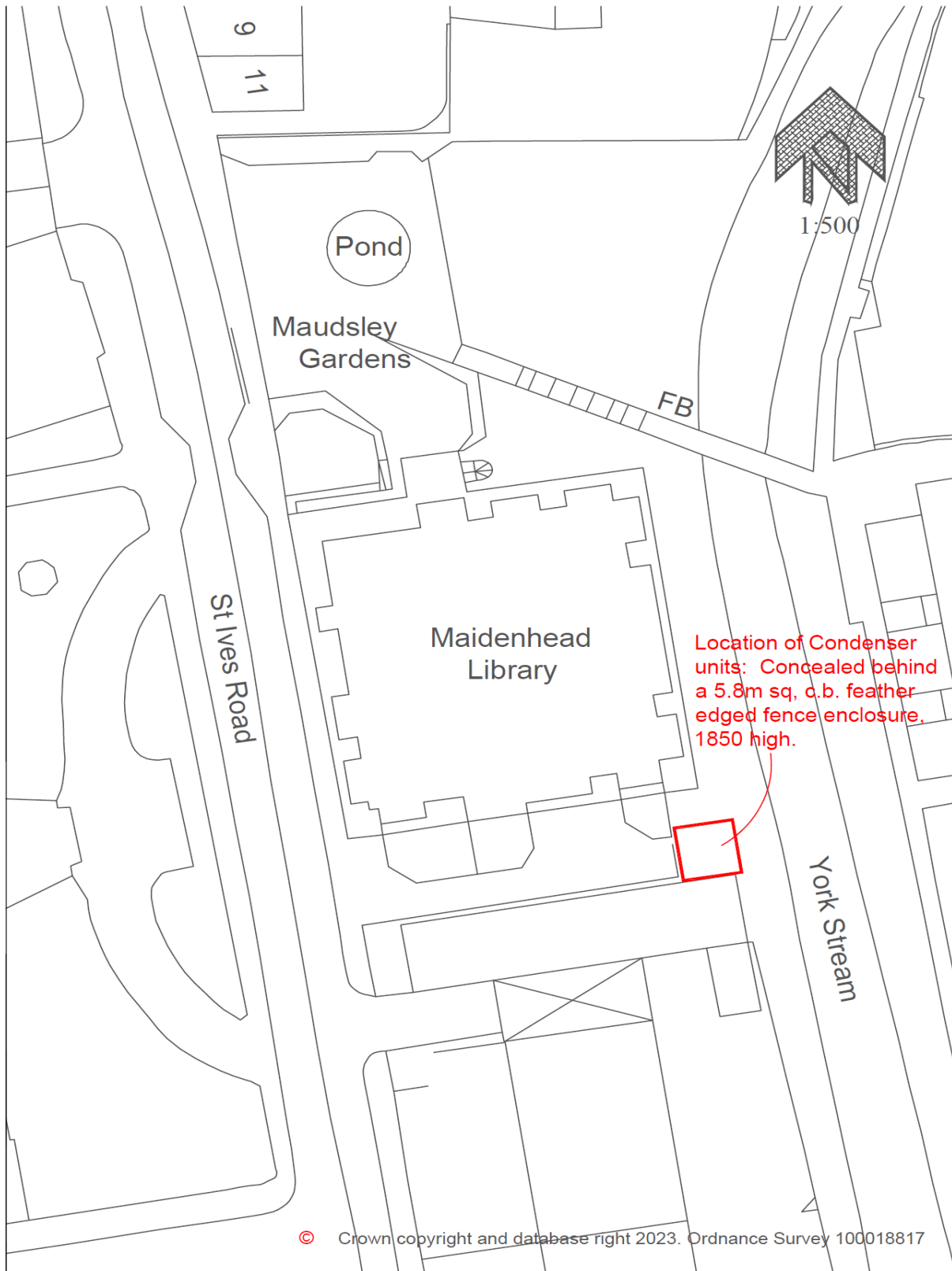


# APPENDICES 23/00464/LBC & 23/00463/FULL

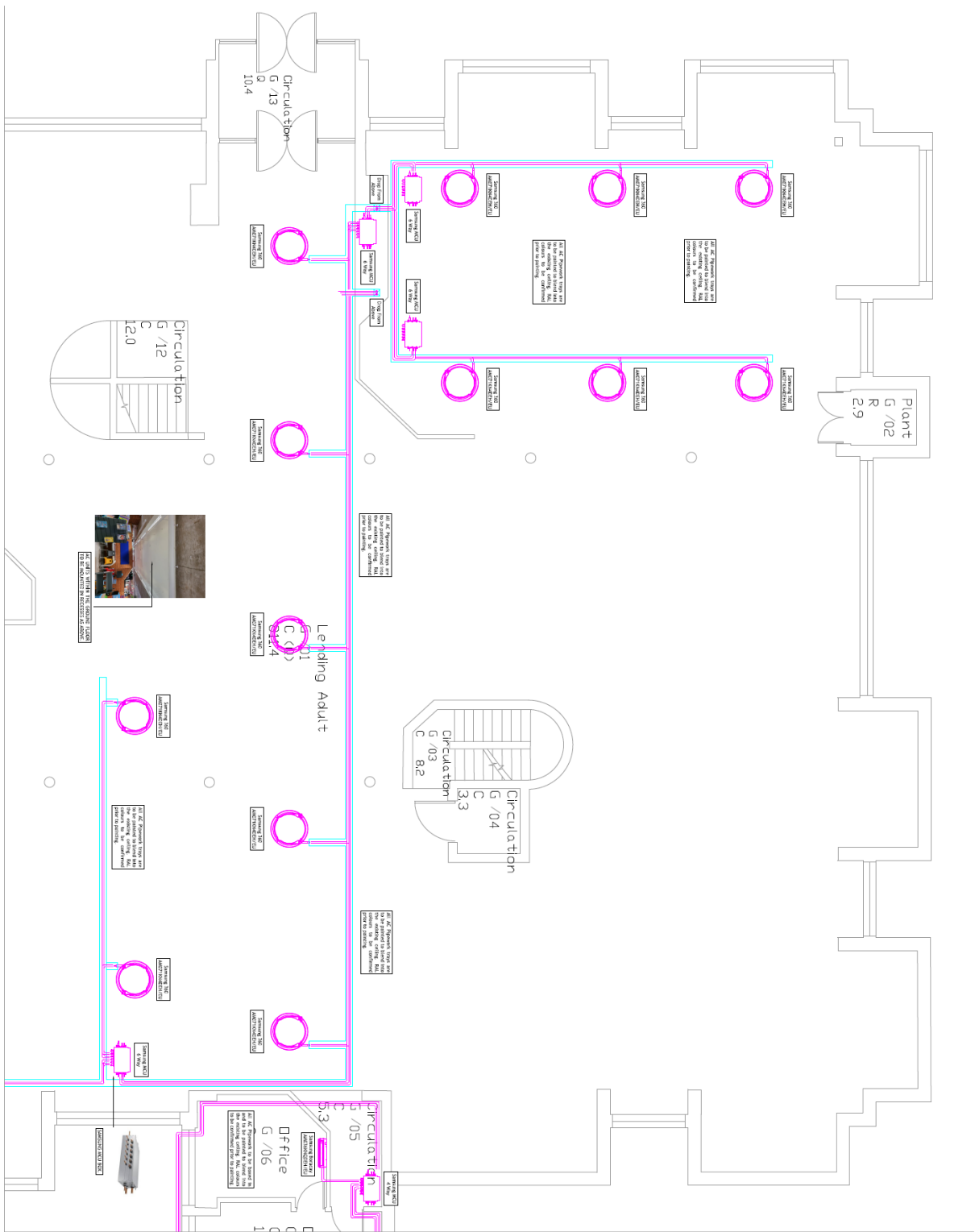
## LOCATION PLAN



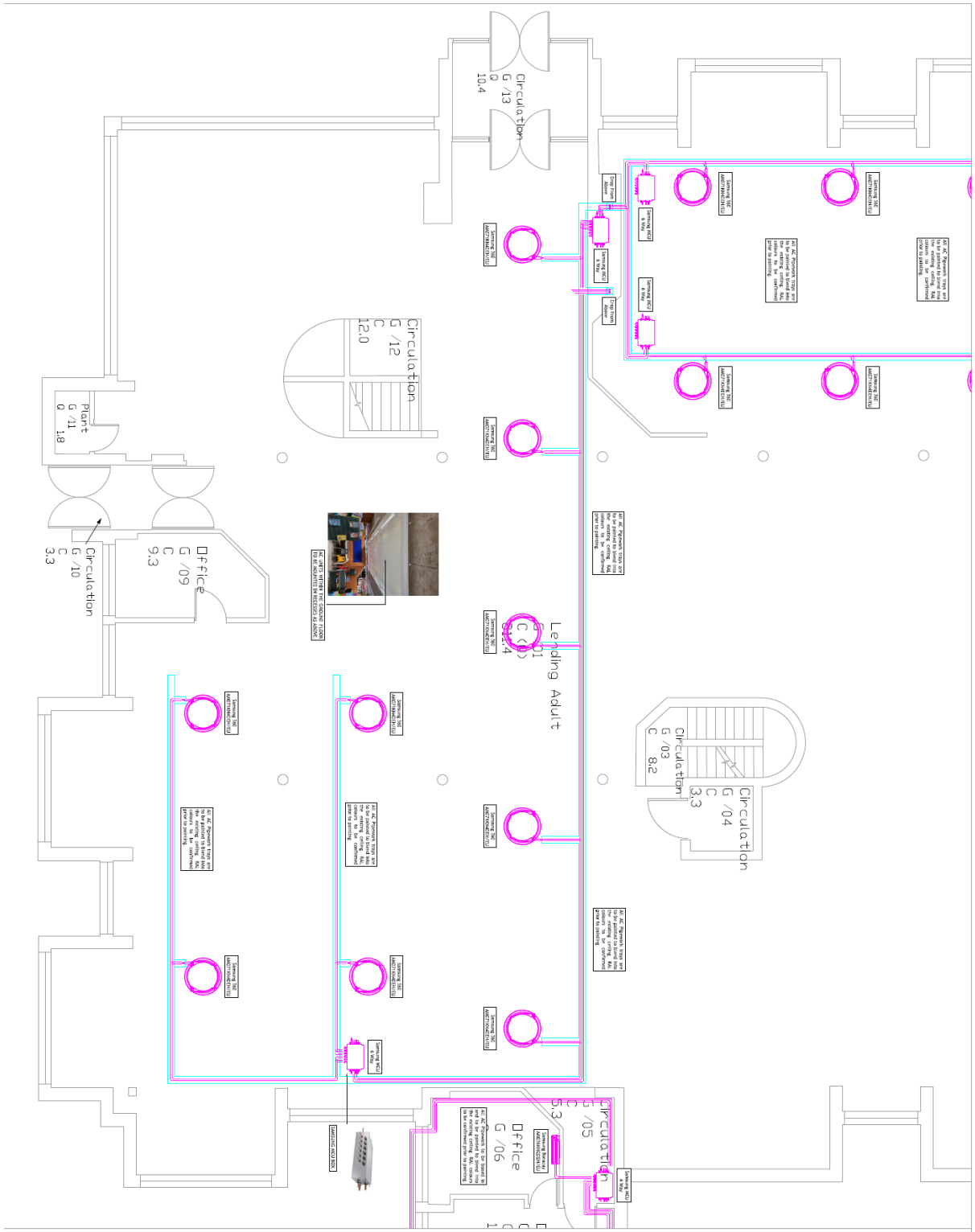
# PROPOSED SITE PLAN



# PROPOSED GROUND FLOOR

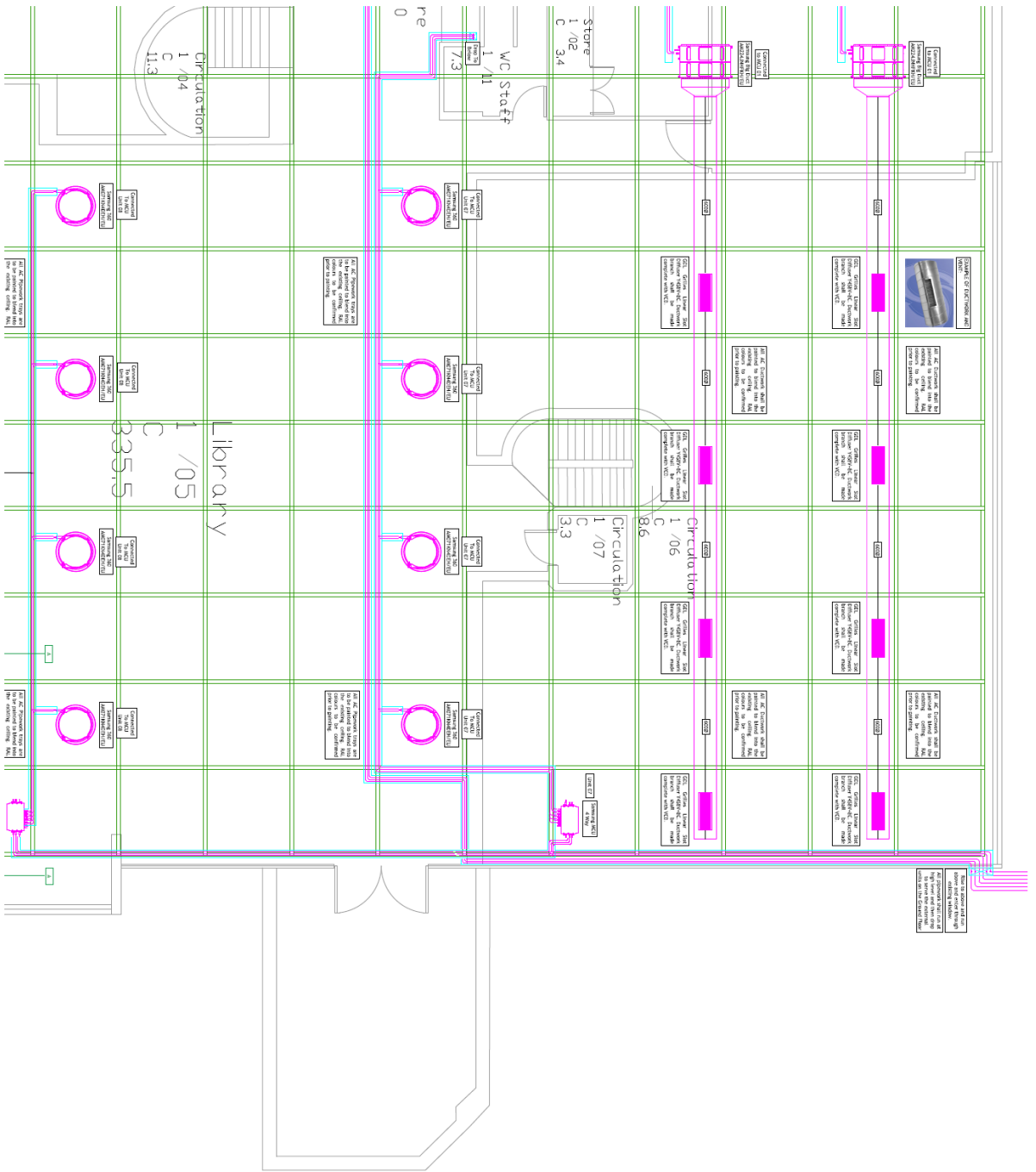


**PROPOSED GROUND FLOOR**

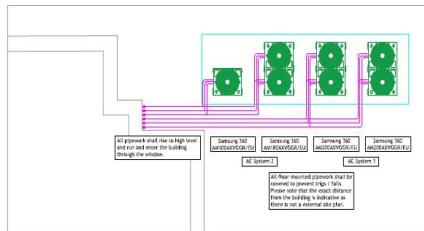


**PROPOSED GROUND FLOOR**





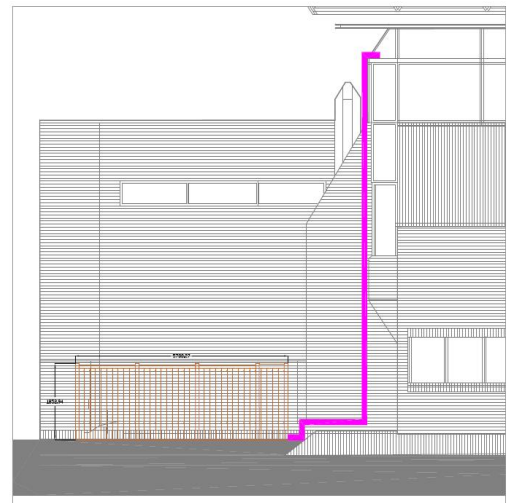
# EXTERNAL CONDENSER LOCATION



Approximate Plant Area (1:50)



The pipework and cables will be encased in a trunking with cover as indicated on the photos. This trunking will be painted to match.



Eastern Elevation (1:50)

Trunking will be powdered coated the same colour as the window frames.

